

Whippoorwill Theater

Technical Information

Revised: July 9, 2018

CONTACT INFORMATION

Library Director	Edith Martimucci	914-273-3887 X 5 ediem@wlsmail.org
Reservations	Virginia Garcia	914-273-3887 X 3 vgarcia@wlsmail.org
Library Technician	Steve Gallo	Available upon request

Address 19 Whippoorwill Road East
Armonk, NY 10504

THEATRE SPECIFICATIONS

Seating Capacity

Stage	40
Auditorium	185 5 handicap places

Stage Dimensions

Proscenium Width	26'
Proscenium to front lip	7'
Proscenium to back curtain	22'
Proscenium height	10' 9"

Dress room

Lower level – 4 - 5 person room with 1 restroom

Wardrobe

The Music Hall is not equipped with wardrobe equipment or laundry needs. You should plan to supply all wardrobe needs for your show.

Crossovers

Crossover area is located on one side of the stage connected with the dress room that is in the lower level.

LIGHTING

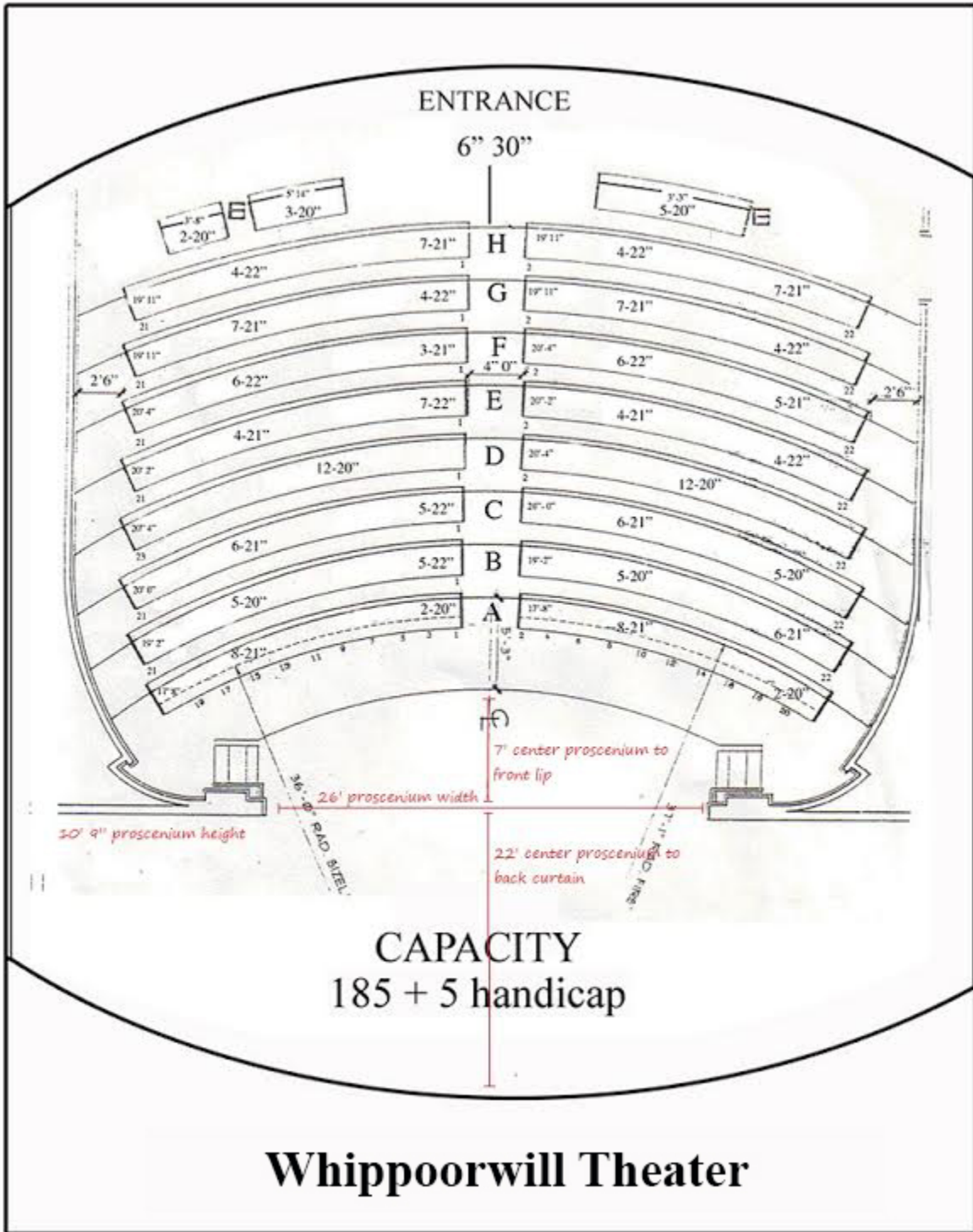
- * ETC Express 48/96 Lighting Console
- * 2, 24 Pack ETC L86 Dimmer Racks
- * Light Plot available upon request

AUDIO WALL RACK

- * Digital Effects Processor - Virtualizer Pro - Model DSP1024P
- * Shure DFR11EQ Feedback Reducer
- * dbx Drive Rack PA Control System
- * dbx 1231 Equalizers, Monitor 1 & 2
- * QSC Pro 1200 PLX1202 Monitor amp
- * Crown XLS202 Delay House Speaker amps
- * QSC Pro 1600watt PLX1602 Main House Speaker amp
- * Mackie SR24 - 4 - VLZ Pro Console

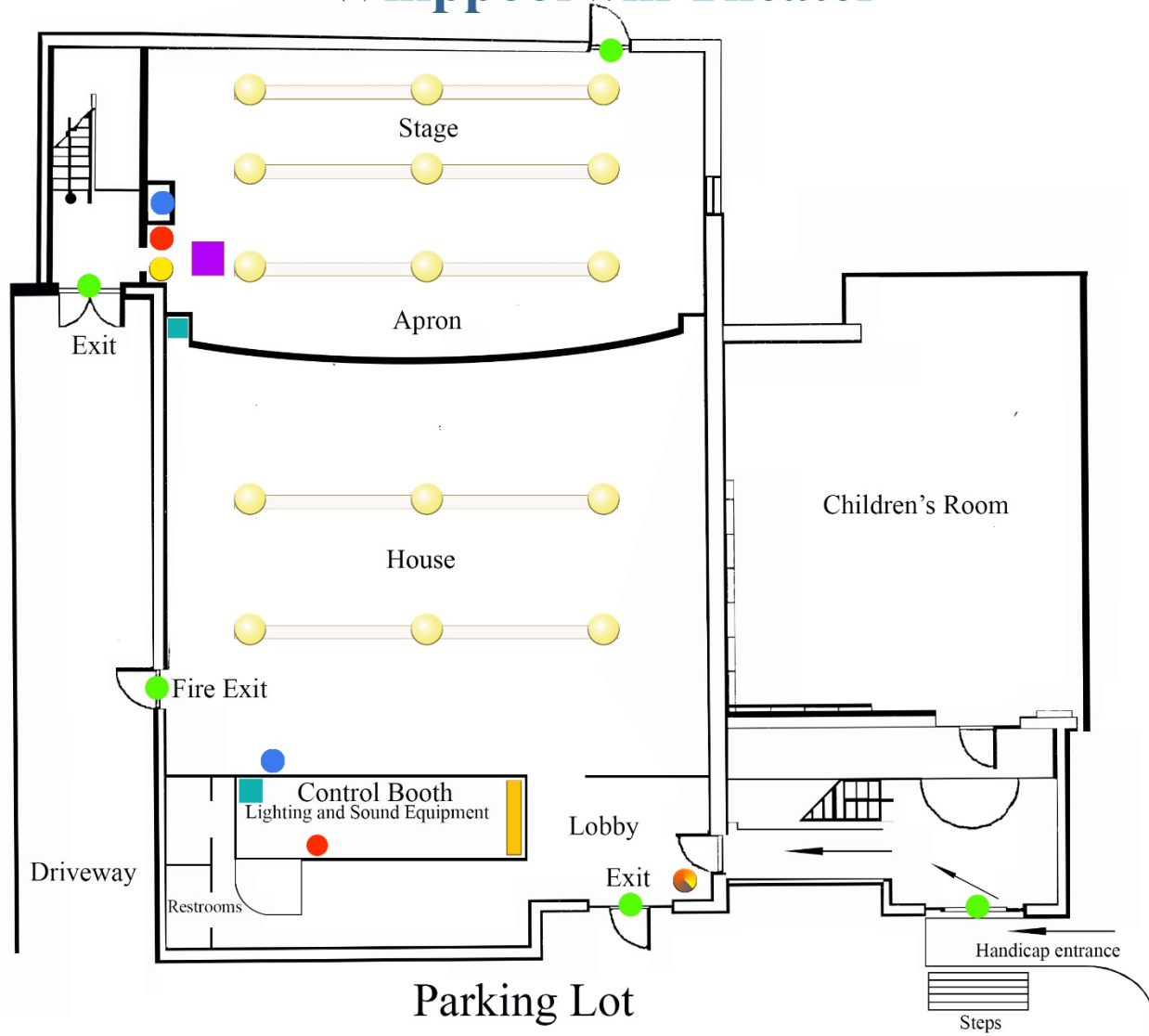
AV FLOOR RACK

- * Furman Rack Power Sequencer
- * Furman Power and Light Rack Module
- * Atlona Video Input Select/Scaler
- * Pioneer BDP - 140 Bluray Player
- * Sony 5 CD changer
- * TASCAM CD - RW700
- * Sampson CR 288 Duel Wireless Mic
- * Benq SP890 Full HD 1080P Projector

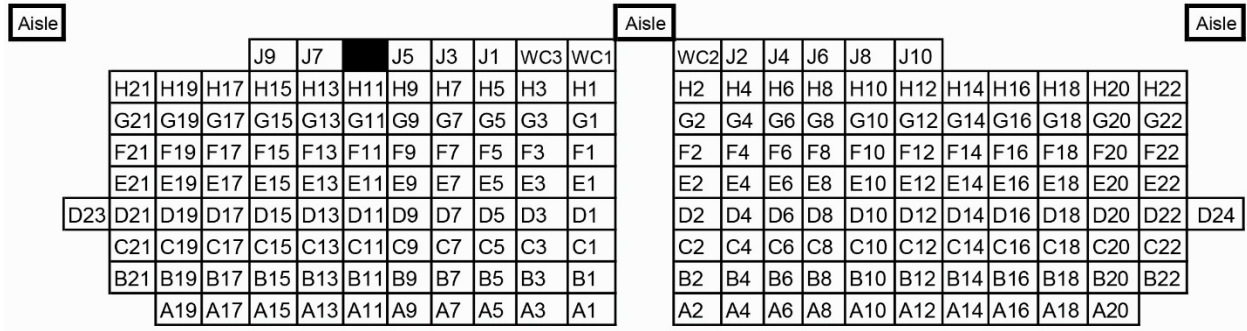


Whipoorwill Theater

North Castle Public Library Whippoorwill Theater

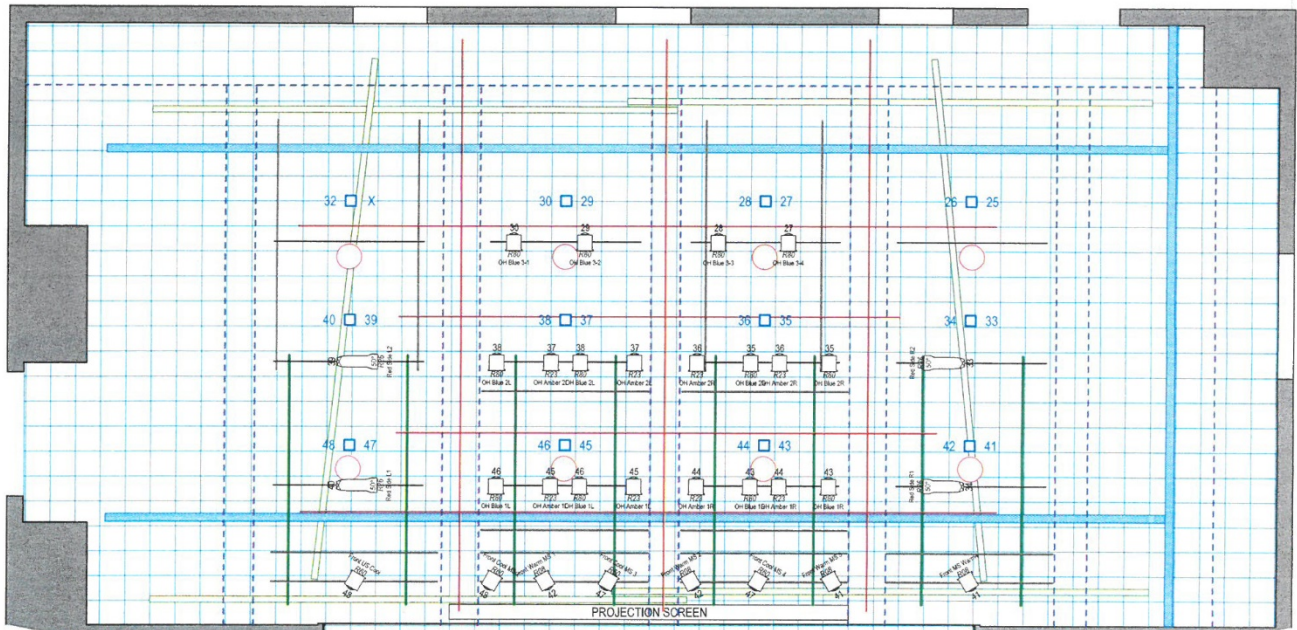


- Lights switch
- Panic button
- Exit
- Circuit breaker
- House, apron & step light switch
- Manual curtain pull
- Dimmer lights:
House, apron & steps
- Thermostat



STAGE

**Stage Electric Plan is available
upon request.**



"Repertory Plot"
May2019

